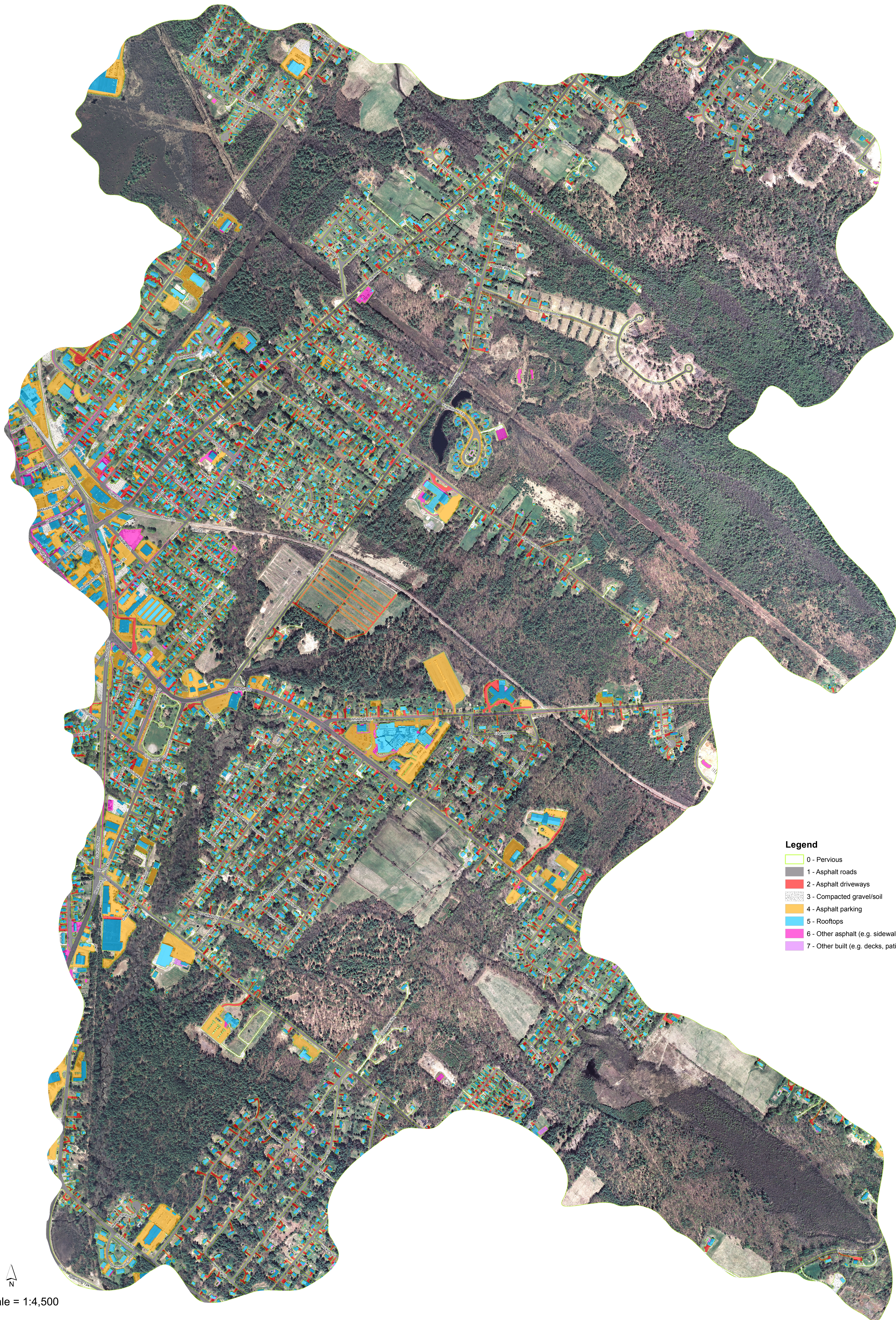


Impervious Surfaces for the Willow Brook Watershed, Rochester, NH



Legend

- 0 - Pervious
- 1 - Asphalt roads
- 2 - Asphalt driveways
- 3 - Compacted gravel/soil
- 4 - Asphalt parking
- 5 - Rooftops
- 6 - Other asphalt (e.g. sidewalks)
- 7 - Other built (e.g. decks, patios)



Mapscale = 1:4,500

March, 2011