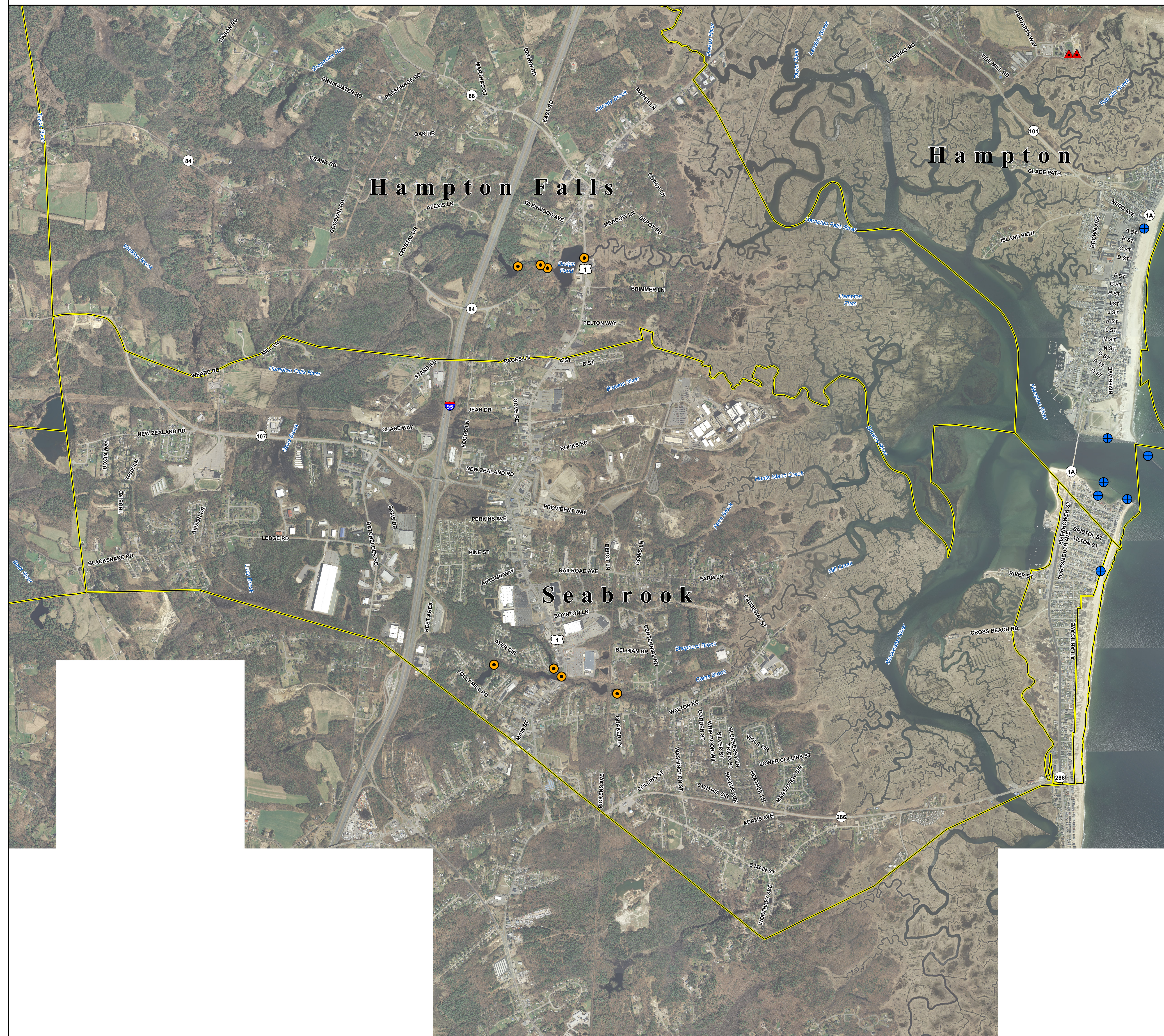


# Areas of Mitigation Interest - Seabrook, NH



## Areas of Mitigation Interest

- ▲ At Risk Essential Facilities
- Coastal Structures
- Dams
- Streamflow Constrictions

## Other Features

- Political Boundaries

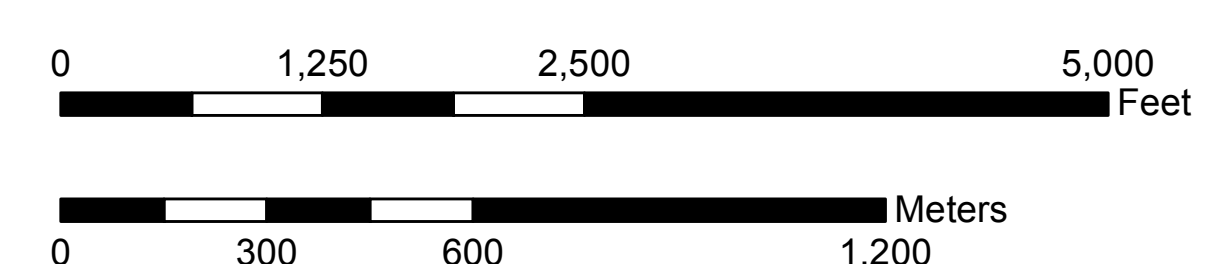
## Areas of Mitigation Interest Data Sources:

Points defined as At Risk Essential Facilities were identified using the Key Destinations data set, compiled by the New Hampshire Regional Planning Commissions (NH GRANIT, 2006). Locations that were in or adjacent to a floodplain were included.

Points defined as Dams and Coastal Structures, including revetments, retaining walls, seawalls, and other structures that interrupt the natural dynamic shoreline processes, were extracted from the countywide Preliminary DFIRM Database (FEMA, 2014).

Streamflow constriction points were created using the New Hampshire Geological Survey's Stream Crossings data set (2012). Structures identified as "mostly incompatible" or "fully incompatible" were included. "Mostly incompatible" indicates structures that are typically undersized for the river or stream channel that contains them, and/or are poorly aligned with the channel form, putting them at a moderate to high risk of failure. "Fully incompatible" includes both of the conditions above, as well as structures that show a reduced ability to pass sediment through the crossing and an increased risk for erosion. These structures are at a high risk of failure.

Map Scale: 1:11,000



Map Projection:  
New Hampshire State Plane Feet, FIPS Zone 2800, NAD 1983

