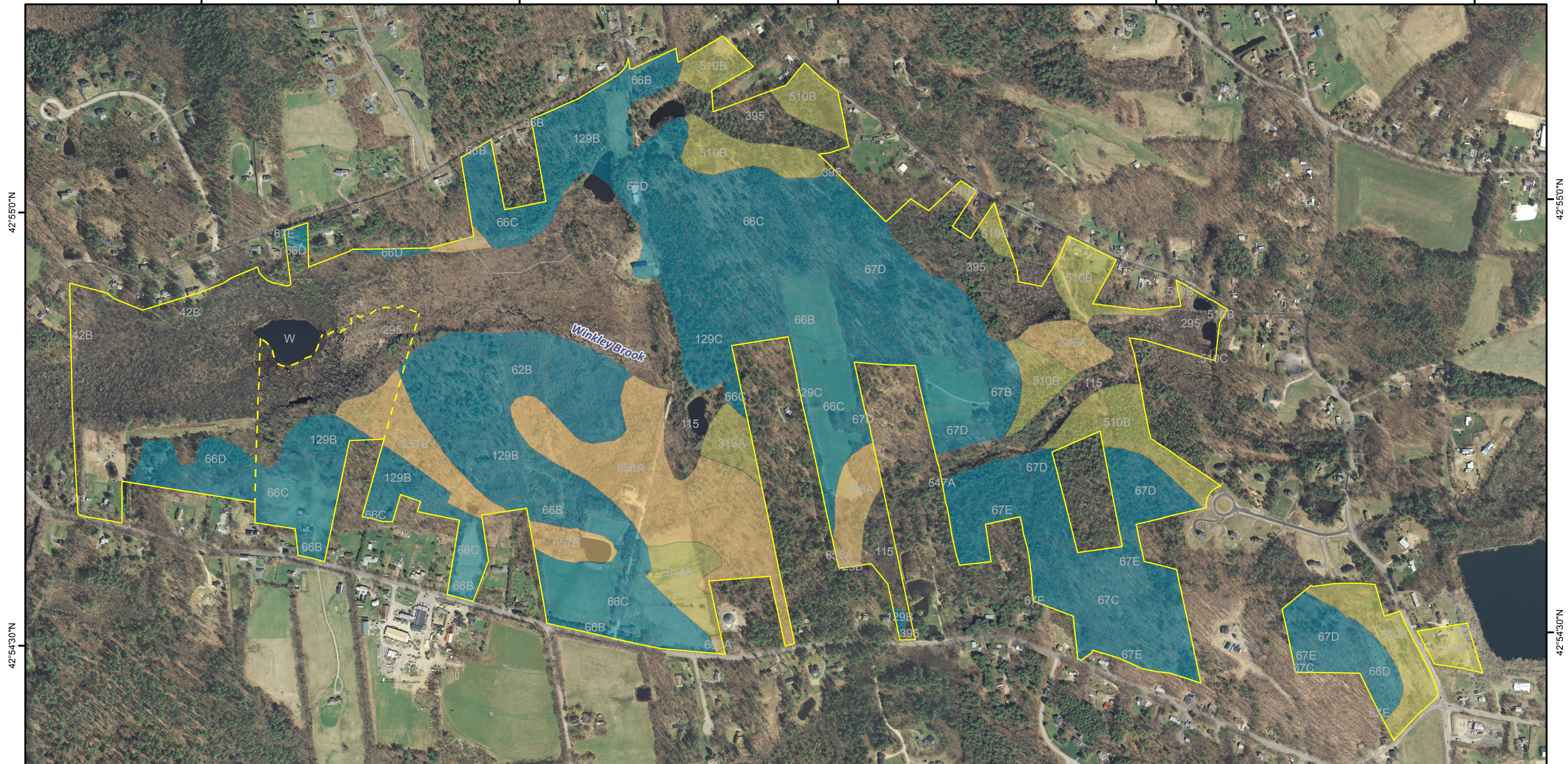


Lewis Family Center Master Plan

IMPORTANT FOREST SOIL GROUPS

70°57'30"W 70°57'0"W 70°56'30"W 70°56'0"W 70°55'30"W



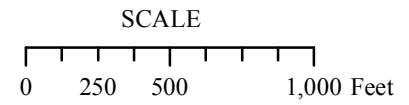
42°55'0"N


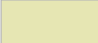



42°55'0"N

42°54'30"N

42°54'30"N

70°57'30"W 70°57'0"W 70°56'30"W 70°56'0"W 70°55'30"W



-  Group IA
-  Group IC
-  Group IIB
-  NC
-  Property Boundary

Data Source(s):
Soils - Natural Resources Conservation Service
Rockingham County Soil Survey

Aerial Photography - 2010, 1 Ft. Resolution



NOVEMBER, 2014