

# Lewis Family Center Master Plan

## CONSERVATION AND PERMANENTLY PROTECTED LANDS

70°57'30"W

70°57'0"W

70°56'30"W

70°56'0"W

70°55'30"W

42°55'0"N

42°55'0"N

42°54'30"N

42°54'30"N

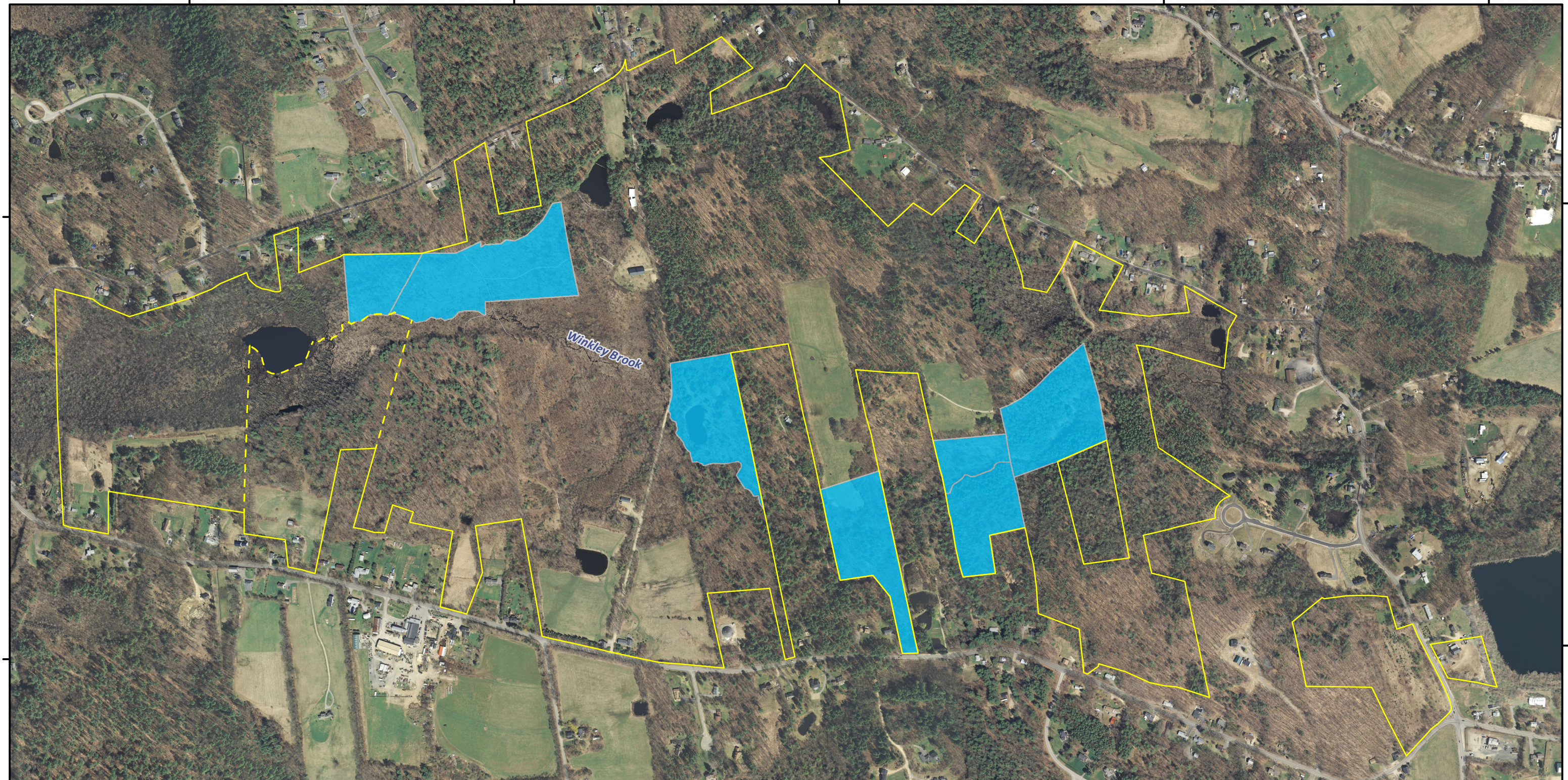
70°57'30"W

70°57'0"W

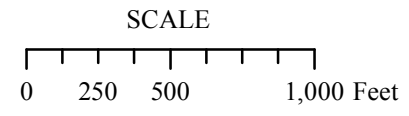
70°56'30"W



70°56'0"W

70°55'30"W



Winkley Brook



-  Conservation Lands
-  Property Boundary

Data Source(s):  
Conservation Lands - Landry Surveying, LLC,  
Nottingham, NH

Aerial Photography - 2010, 1 Ft. Resolution

NH  
GRANIT

NOVEMBER, 2014